



**NORTH OF TYNE AND GATESHEAD GUIDELINES
FOR MANAGEMENT OF COMMON UROLOGICAL
CONDITIONS IN ADULTS \geq 18 YEARS IN PRIMARY
CARE**

July 2013 (minor update page 11, March 2014)

CONTENTS

	Page
Introduction	<u>3</u>
Scrotal lumps	<u>4</u>
Haematuria	<u>5</u>
Urinary tract infection	<u>6</u>
Haemospermia	<u>7</u>
Renal cyst on ultrasound	<u>8</u>
Suspected urolithiasis	<u>9</u>
Management of PSA	<u>10</u>
Follow up of patients	
Raised PSA without cancer	<u>11</u>
Prostate cancer not currently on treatment, in whom radical treatment would be offered	<u>11</u>
Prostate cancer managed with hormonal therapy	<u>12</u>
Curative treatment for prostate cancer	<u>13</u>
Lower urinary tract symptoms (LUTS) assessment and management	<u>14</u>
International Prostate Symptom Score (IPSS)	<u>15</u>
Drug flow in patients with LUTS	<u>16</u>
Appendix	<u>17</u>
Membership of the group	
Declared conflicts of interest	
Date of guideline / review date	

INTRODUCTION

This guidance is intended to inform management of common urological conditions in primary care and has been developed as a consensus between representatives from primary and secondary care with reference to national guidelines, including from NICE as appropriate. The guidelines are intended to guide clinical management, but every patient should be assessed and managed individually.

These guidelines are intended for all clinicians in primary care in the Newcastle, North Tyneside, Northumberland and Gateshead areas involved in managing patients with urological conditions. This is the first iteration of these guidelines and any gaps should be identified for inclusion when the guideline is reviewed.

How to use the guidelines

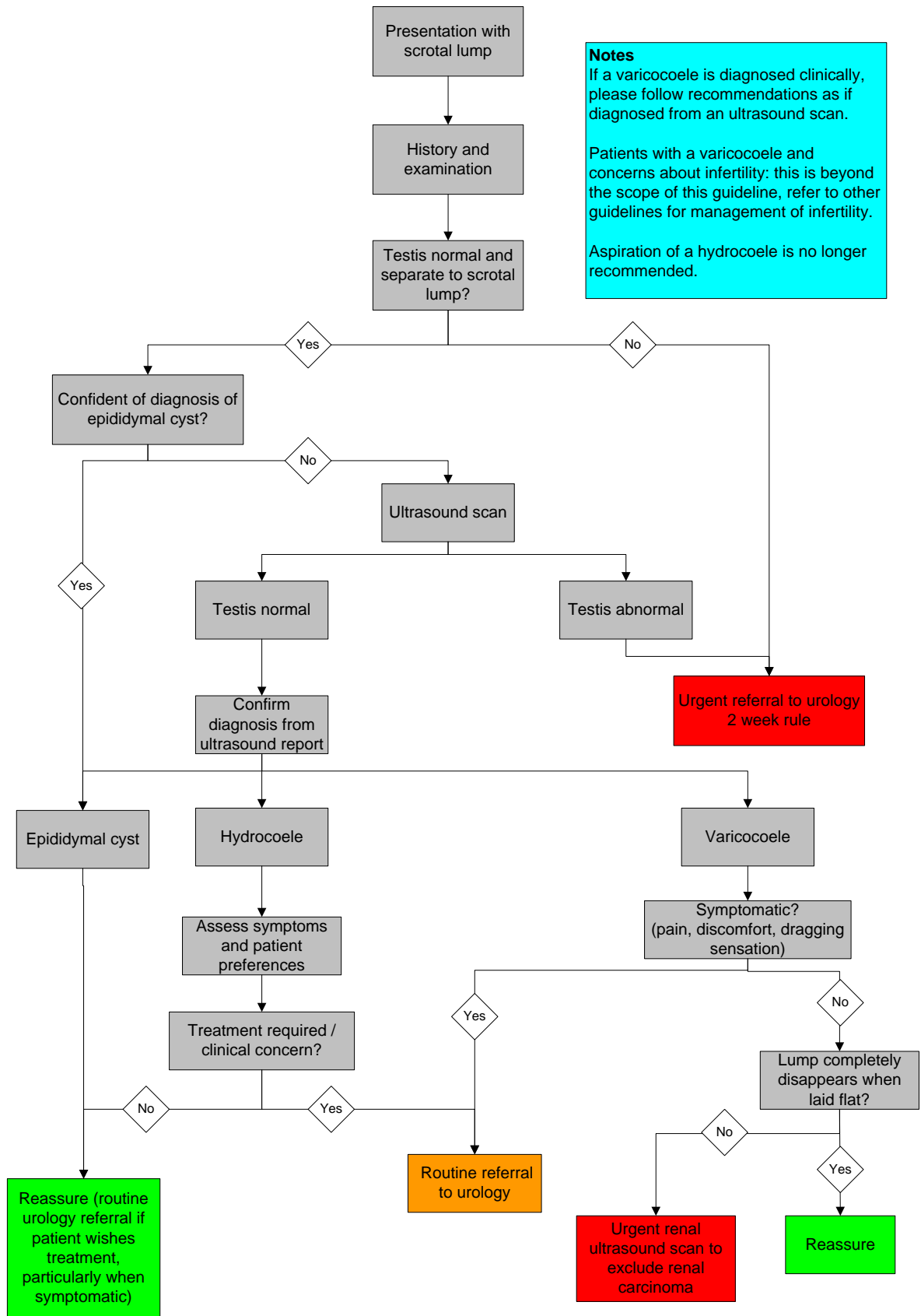
The guidelines are a set of flow charts covering a variety of urological conditions. Each of these can be printed and laminated for easy reference if preferred.

The BNF and the North of Tyne / Gateshead Formulary should be referred to as appropriate.

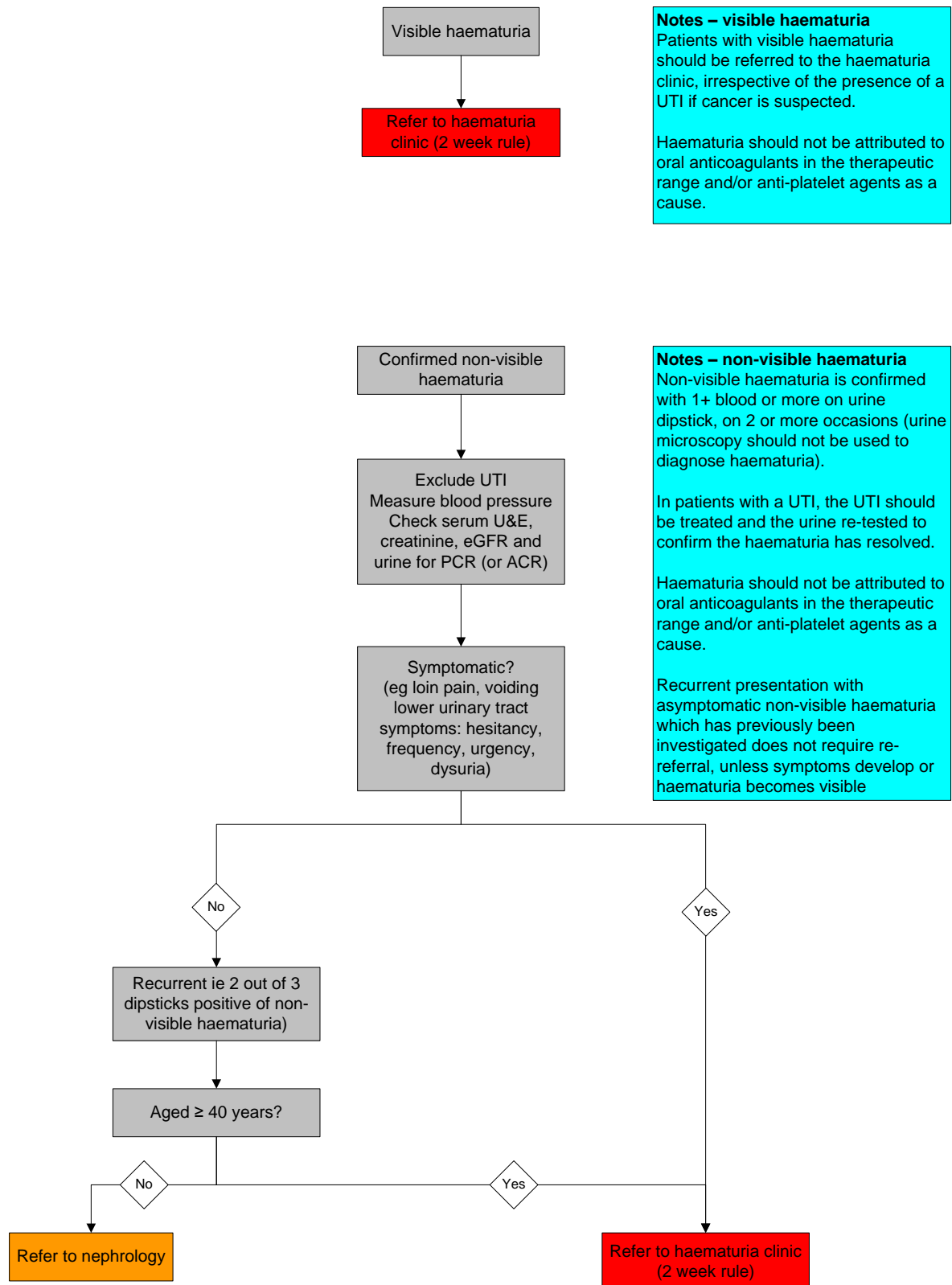
Referrals

When referral to secondary care urology clinic is recommended in the guideline, referral for patients to be seen at a local outreach clinic may be preferred. It is anticipated that clinicians in localities where such clinics are available will be aware of them, but further information can be obtained from the urology department at the Freeman Hospital.

Scrotal lumps

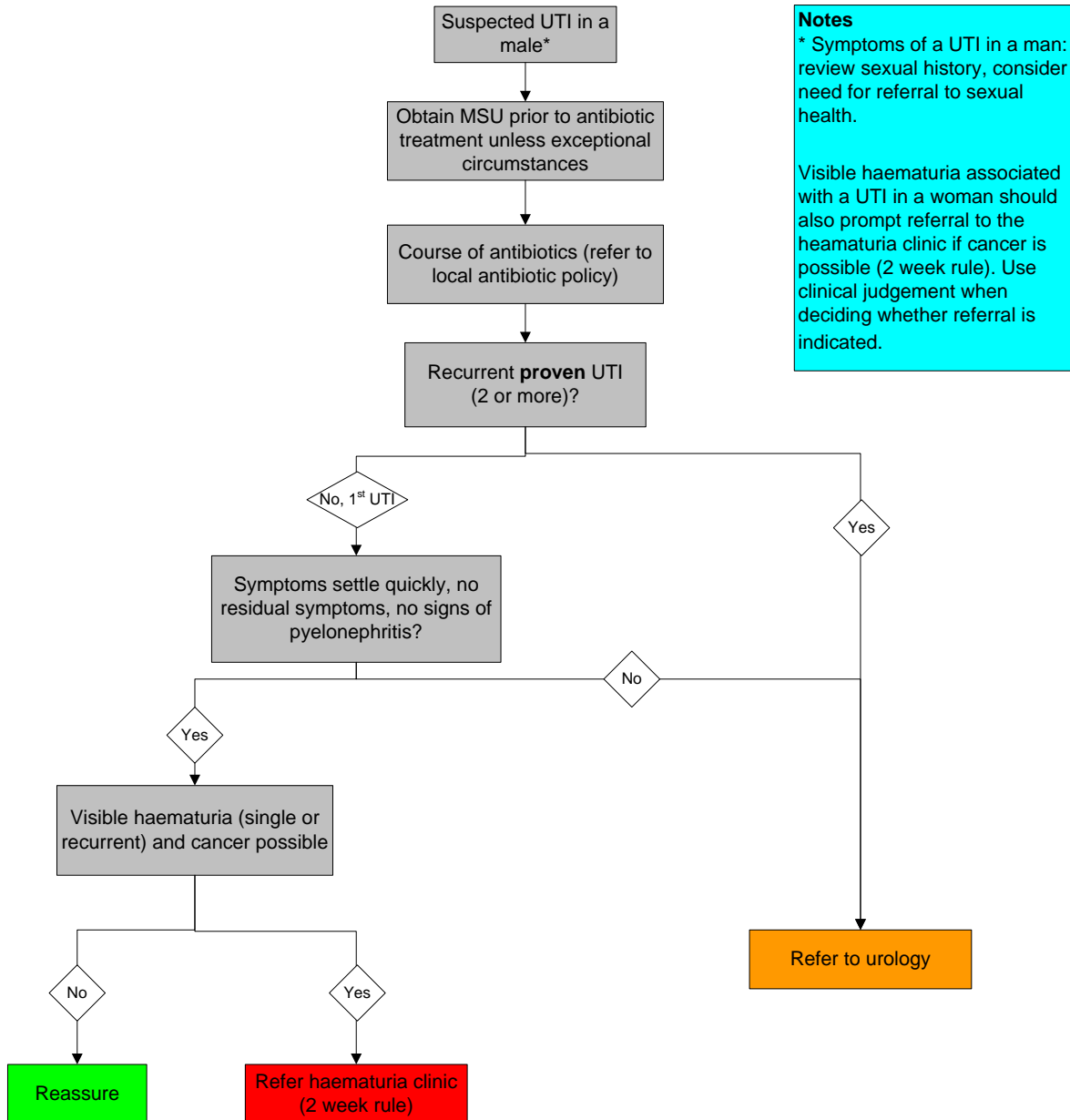


Haematuria

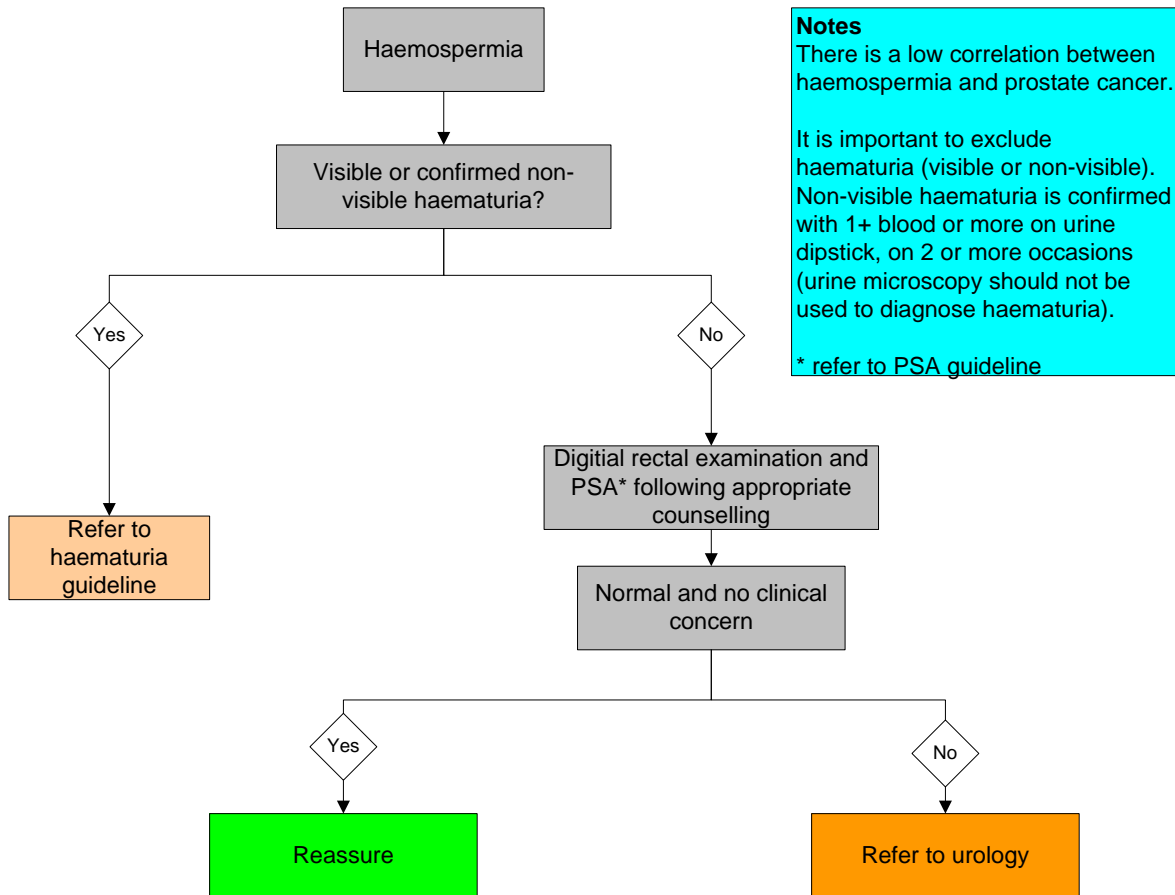


Note: The guideline group recognised that the Northern Cancer Network is developing guidelines for haematuria, and the outcome is pending. This pathway will be updated if there is a significant difference in the recommendations eg with respect to age cut offs for referral to urology or nephrology.

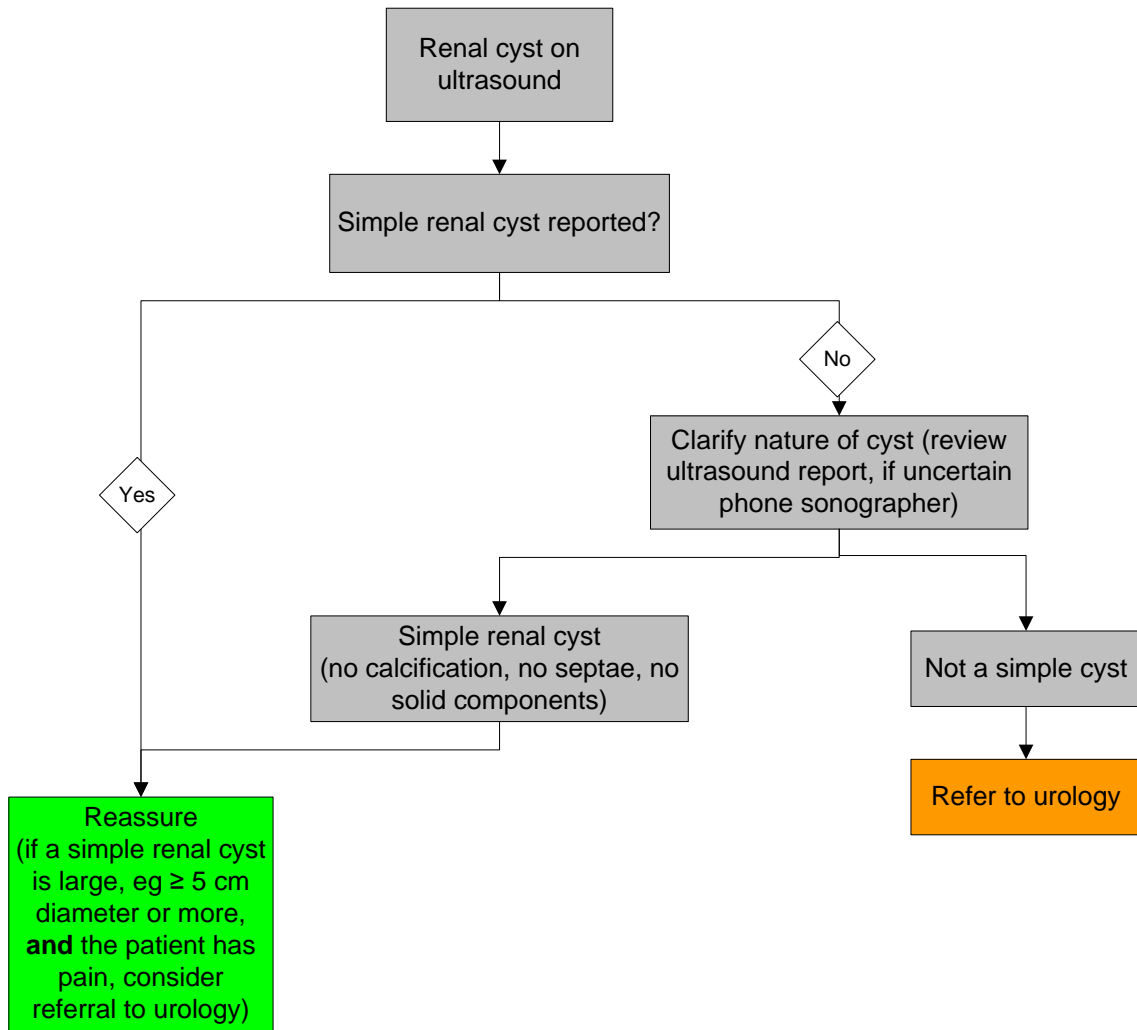
Urinary tract infection



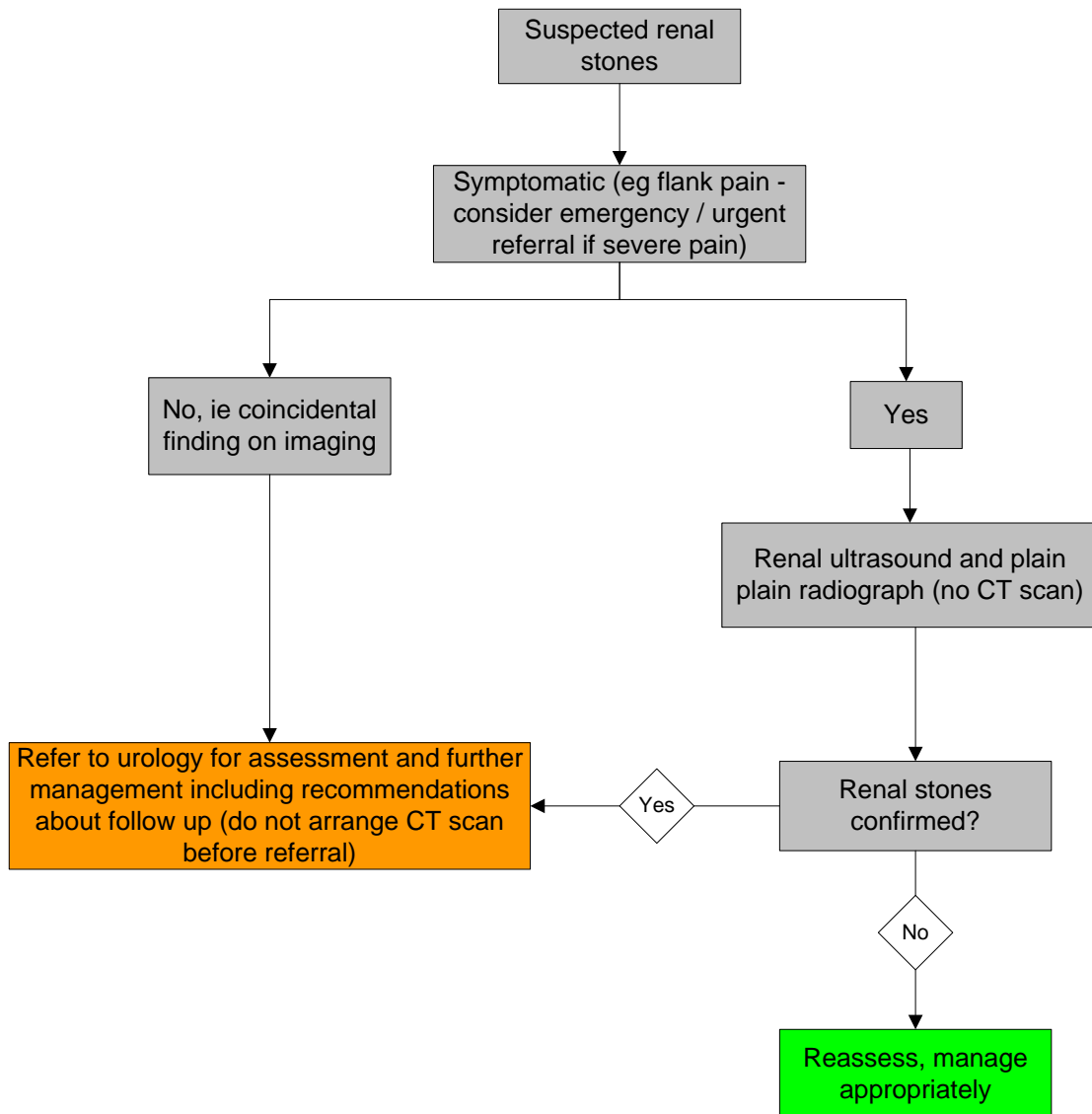
Haemospermia



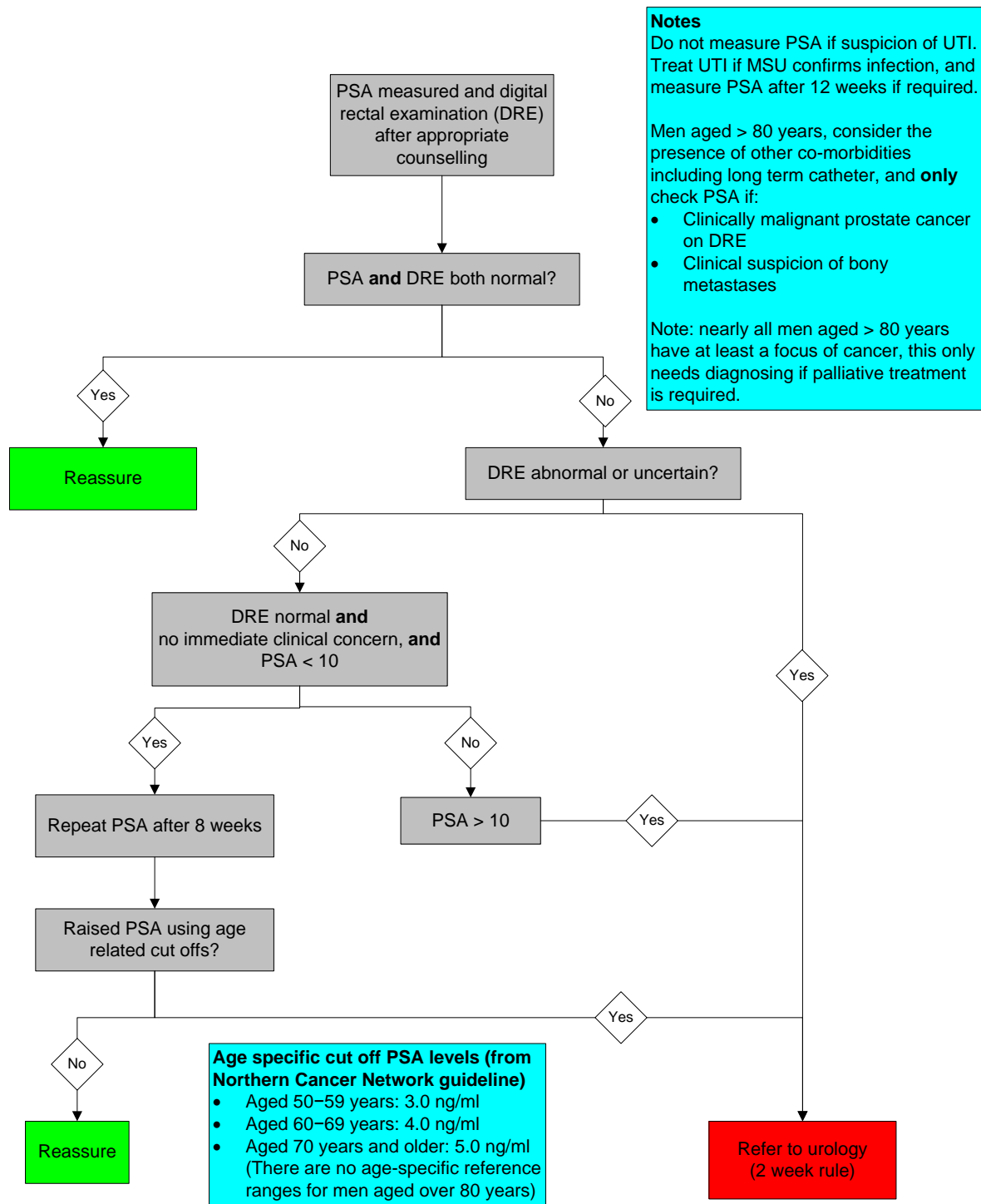
Renal cyst on ultrasound



Suspected renal stones

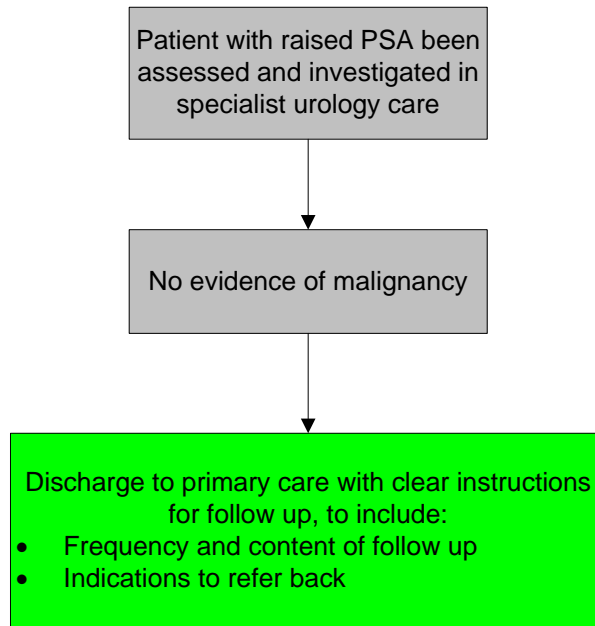


Management of PSA

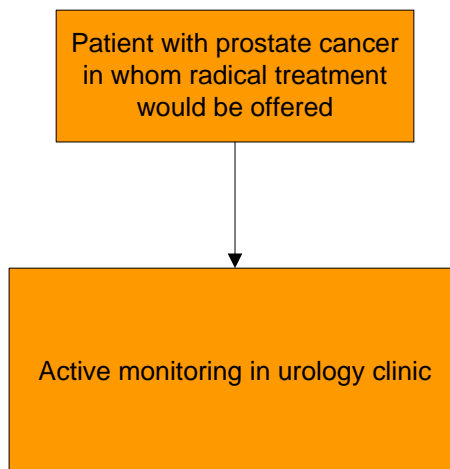


Follow up of patients

Raised PSA without cancer

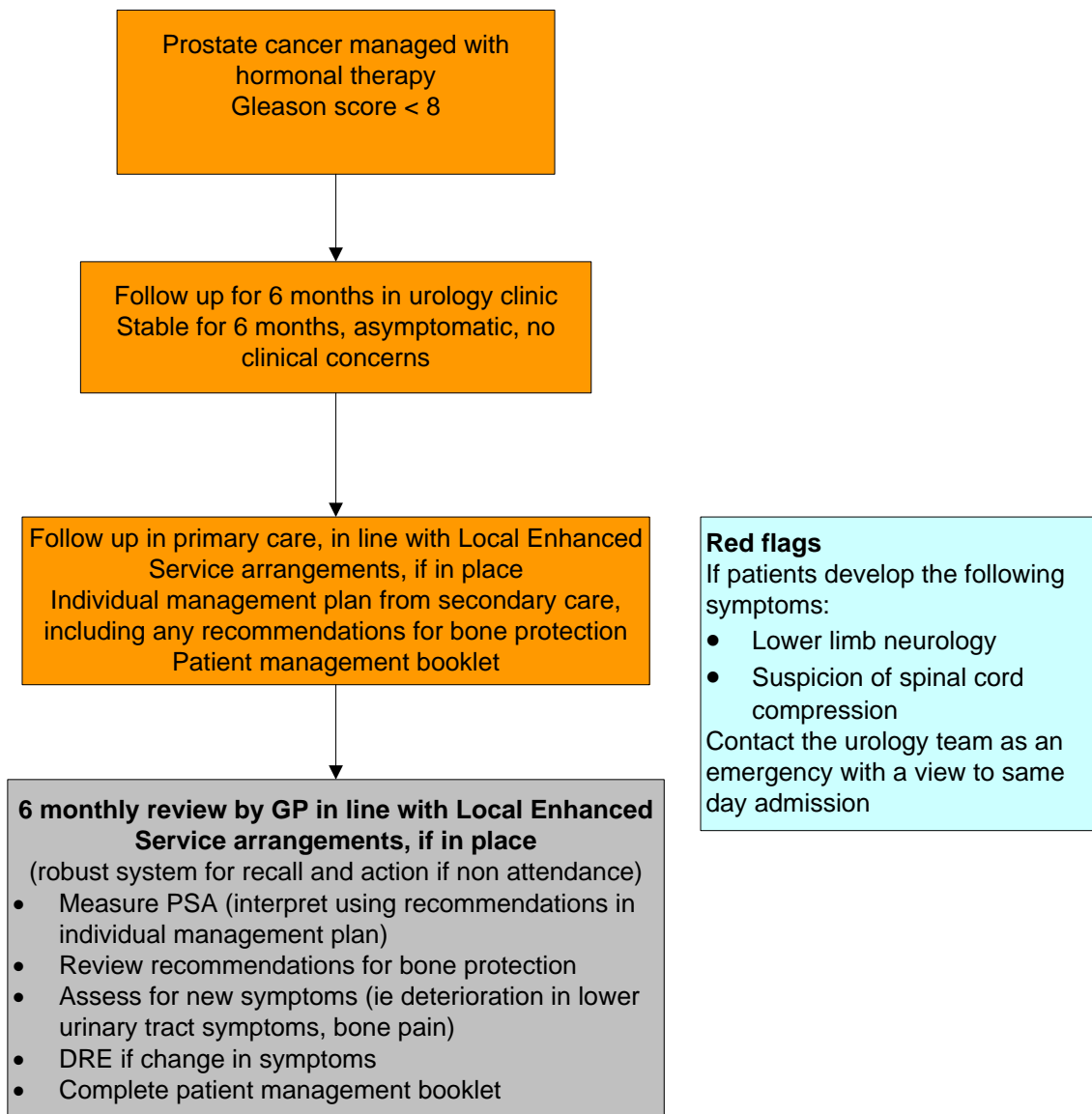


Prostate cancer not currently on treatment, in whom radical treatment would be offered¹



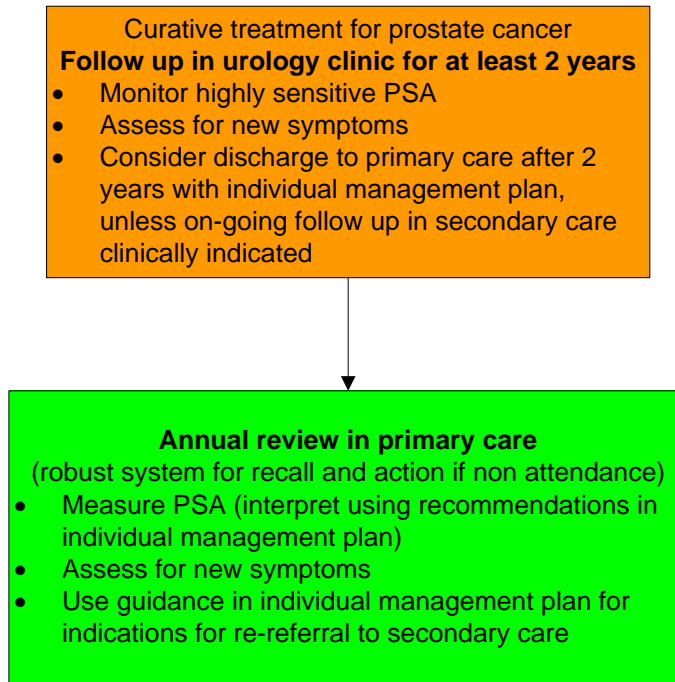
¹ Updated text March 2014. Recommendations in NICE CG175 Prostate Cancer will be implemented as appropriate by urologists

Prostate cancer managed with hormonal therapy

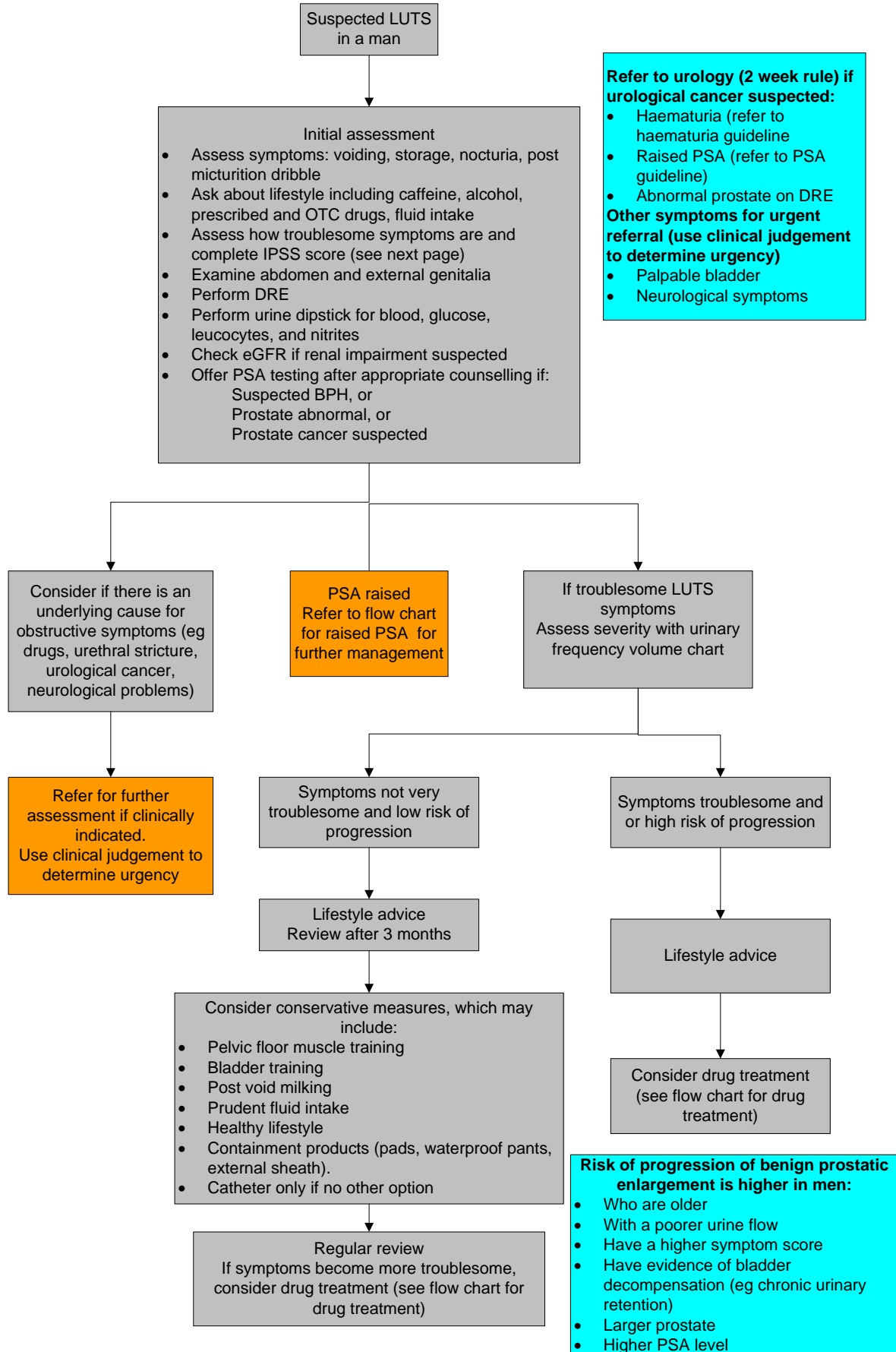


Patients should only be discharged for follow up in primary care when an appropriate LES, or similar arrangements, are in place.

Curative treatment for prostate cancer



Lower urinary tract symptoms (LUTS) in men: assessment and management



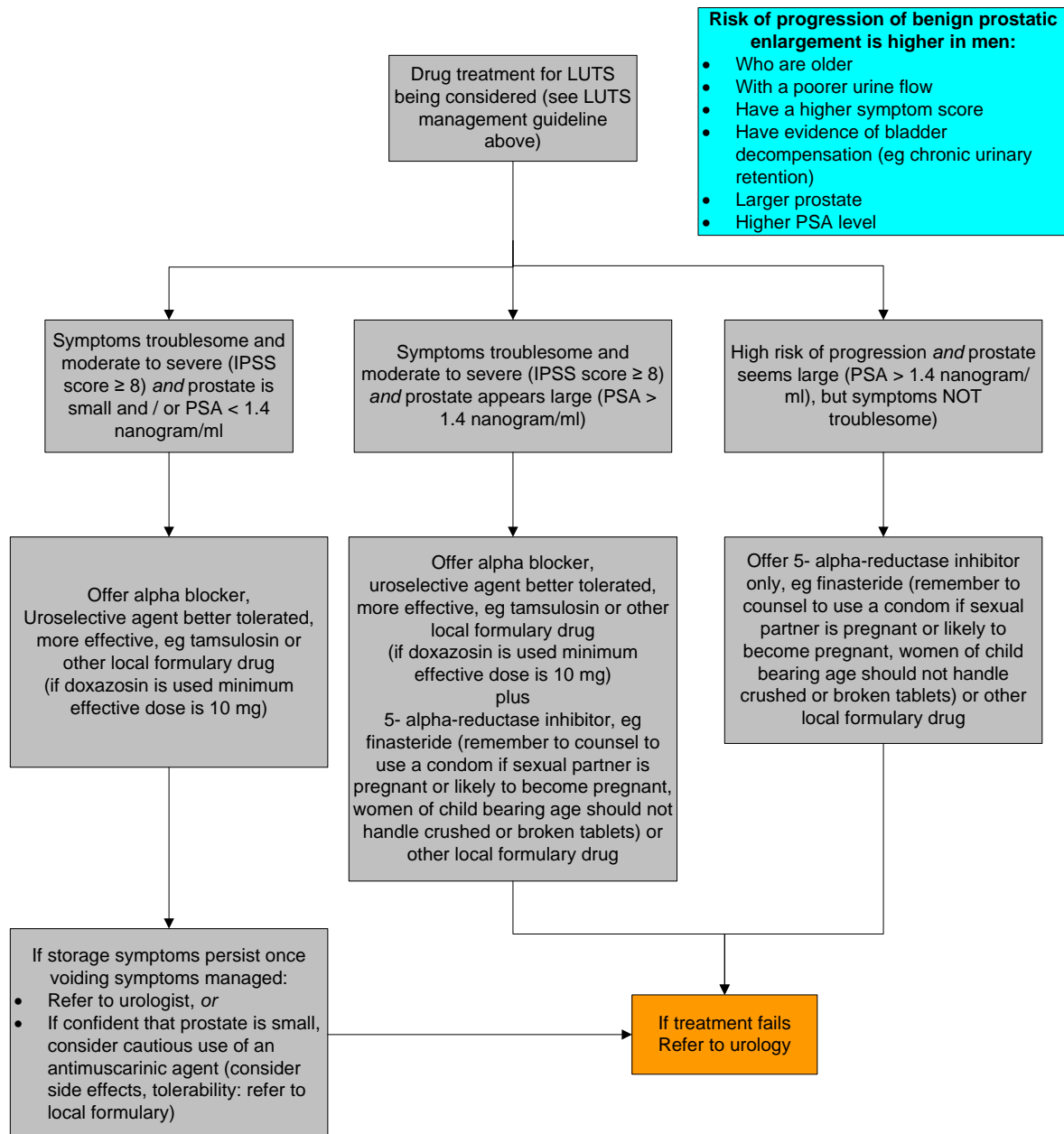
International Prostate Symptom Score (IPSS)

Name:

Date:

	Not at all	Less than 1 time in	Less than half the time	About half the time	More than half the time	Almost Always	Your score
Incomplete Emptying Over the past month, how often have you had a sensation of not emptying your bladder completely after you finish urinating?	0	1	2	3	4	5	
Frequency Over the past month, how often have you had to urinate again less than 2 hours after you finished urinating?	0	1	2	3	4	5	
Intermittency Over the past month, how often have you found you stopped and started again several times when you urinated?	0	1	2	3	4	5	
Urgency Over the last month, how difficult have you found it to postpone urination?	0	1	2	3	4	5	
Weak stream Over the past month, how often have you had a weak urinary stream?	0	1	2	3	4	5	
Straining Over the past month, how often have you had to push or strain to begin urination?	0	1	2	3	4	5	
	None	1 time	2 times	3 times	4 times	5 times or more	Your score
Nocturia Over the past month, how many times did you most typically get up to urinate from the time you went to bed until the time you got up in the morning?	0	1	2	3	4	5	
Total IPSS Score							
Bothersomeness Quality of life due to urinary symptoms	Delighted	Pleased	Mostly satisfied	Mixed – about equally satisfied and dissatisfied	Mostly dissatisfied	Unhappy	Terrible
If you were to spend the rest of you life with your urinary condition the way it is now, how would you feel about that?	0	1	2	3	4	5	6

Drug flow in patients with LUTS being considered for drug treatment



Notes
Refer to local formulary for additional information and for details of drugs on the local formulary

Follow up
Alpha-blocker: after 4-6 weeks, and then every 6-12 months
5-alpha-reductase inhibitor: after 3-6 months, then every 6-12 months
Antimuscarinic agent: every 4-6 weeks until stable, then every 6-12 months

Interpretation of PSA results
After 6 months of 5-alpha reductase inhibitor use, PSA levels reduce by about 50%. When interpreting a PSA level measured after at least 6 months of 5-alpha reductase inhibitor treatment, double the PSA result

APPENDIX

Membership of the guideline development group

Dr Jane Skinner (guideline co-ordinator), Consultant Community Cardiologist and Clinical Director for Community Services, The Newcastle upon Tyne Hospitals NHS Foundation Trust

Anne-Marie Bailey, Medicines Management, Newcastle and Gateshead CCG Alliance

Dr David Brown, GP, Northumberland CCG. From March 2014, John Warrington, Planned Care Lead, Northumberland CCG

Dr M Chaudhary, GP, Newcastle West CCG

Dr Relton Cummings, GP, Newcastle North and East CCG

Dr Heather Galloway, GP, Gateshead CCG

Dr Chris Jewitt, GP, Gateshead CCG

Matthew Lowery, Formulary Pharmacist, The Newcastle upon Tyne Hospitals NHS Foundation Trust

Dr Anna O'Riordan, Consultant Urologist, The Newcastle upon Tyne Hospitals NHS Foundation Trust

Dr Toby Page, Consultant Urologist, The Newcastle upon Tyne Hospitals NHS Foundation Trust

Dr Helen Seymour, Medicines Management, North of Tyne

Dr Matthew Shaw, Consultant Urologist, The Newcastle upon Tyne Hospitals NHS Foundation Trust

Dr Naeem, Soomro, Consultant Urologist and Clinical Director for Urology Services, The Newcastle upon Tyne Hospitals NHS Foundation Trust

Dr Vivienne Tut, GP, North Tyneside CCG

Declared conflicts of interest

Toby Page has received honoraria from GSK, Pfizer, Astellas and Ferring, and educational support from Ethicon, Ferring and Astra-Zeneca.

Date of guideline and review date

July 2013, review July 2016